

# Setting up Eduroam (MAC – General Setup guide)

## Step 1: Check System requirements

To connect to Eduroam your Mac must have:

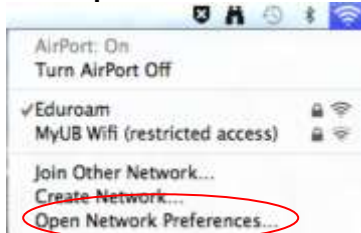
- > Airport 4.2 software (available from the [Apple downloads website](#))
- > An AirPort Extreme card
- > Mac OS X 10.5 and above

## Step 2: Configure Eduroam

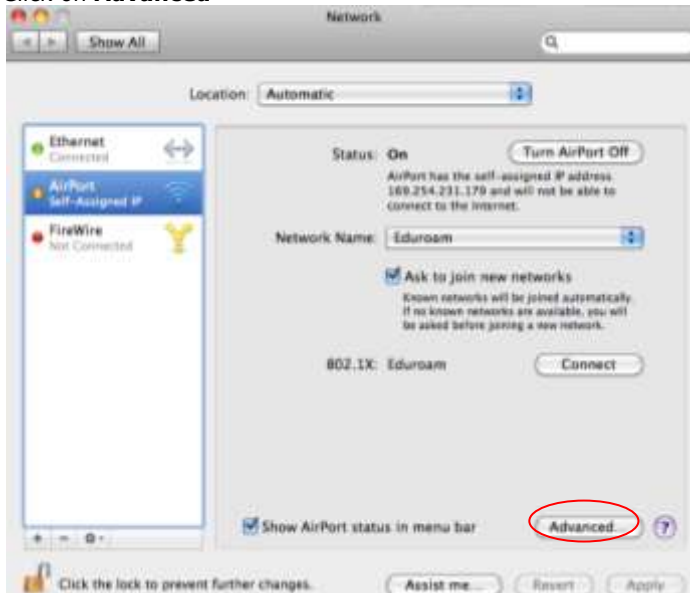
1. Click on the Airport icon located at the top right hand corner of the menu bar



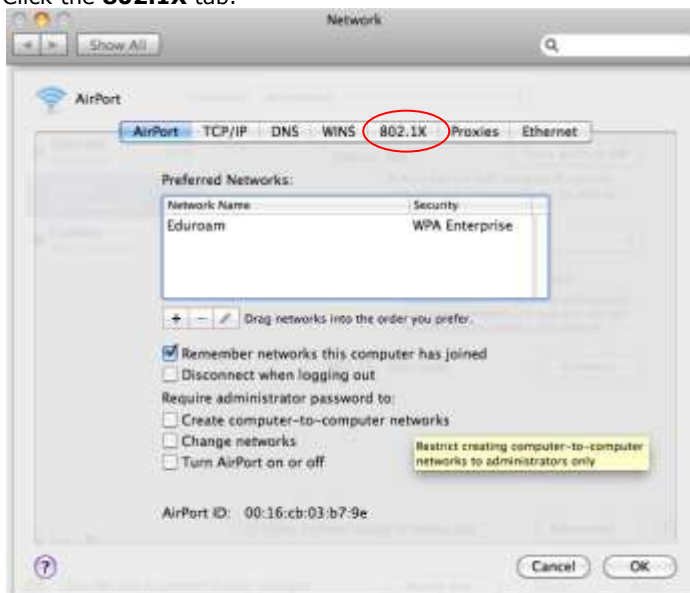
2. Select **Open Network Preferences**



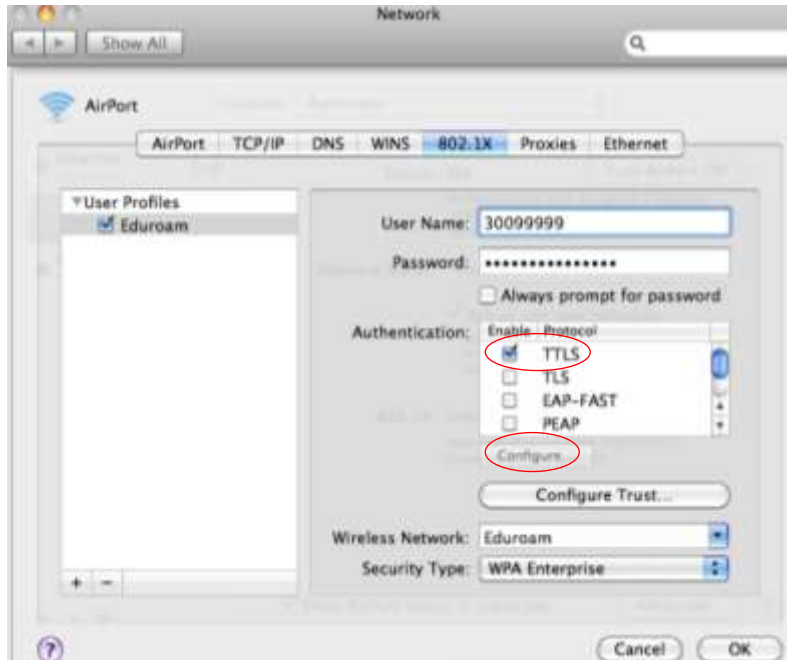
3. Click on **Advanced**



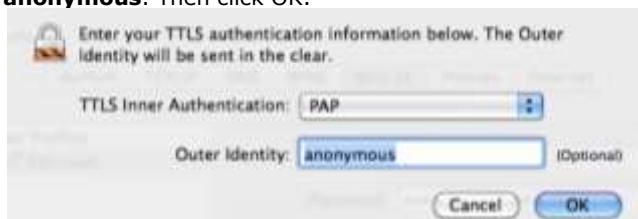
4. Click the **802.1X** tab.



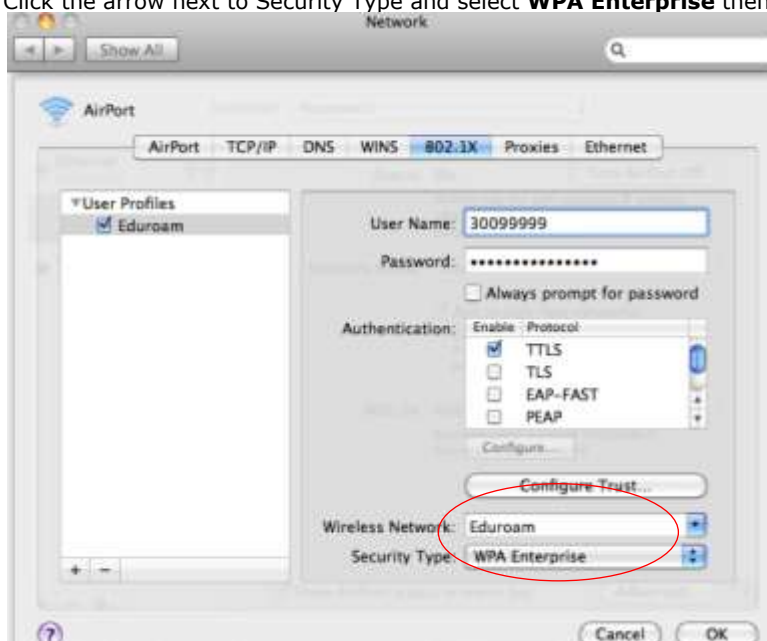
5. Under the user profiles there should be a profile called **Eduroam**. If not click on the '+' button and select **Add User Profile** and name the profile **Eduroam**. With the profile highlighted, enter your username and password (student ID number and password you use to access the university computers) and leave the 'Always prompt for password' box unticked. Under the **Authentication** list ensure only **TTLS** is ticked. With this highlighted click on **Configure**.



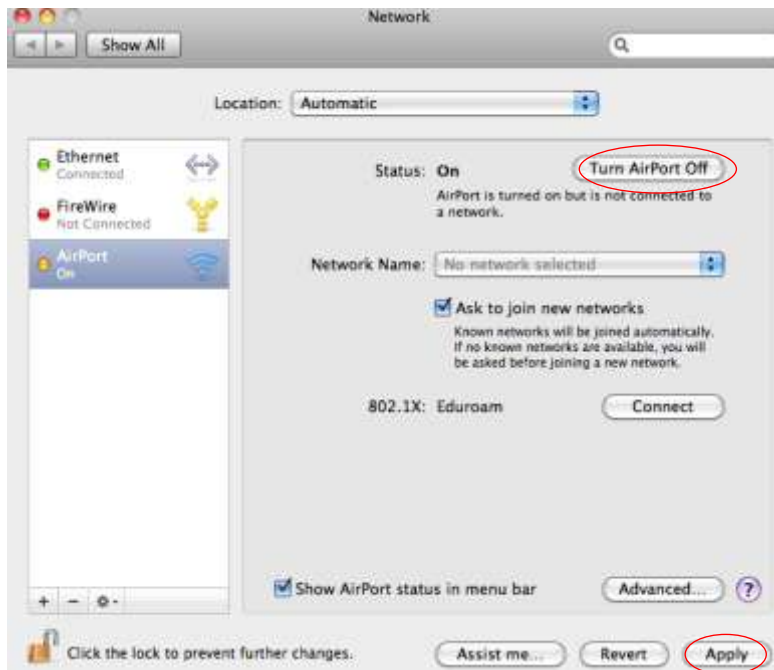
The TTLS Inner Authentication should always be **PAP** and in the Outer Identity field type **anonymous**. Then click OK.



In the Wireless Network box click the arrow and select **Eduroam** if it is not already selected. Click the arrow next to Security Type and select **WPA Enterprise** then click OK.



6. Click **Apply**, then click **Turn AirPort Off** and wait for a few seconds, then turn it back on.



Eduroam should now automatically connect. It may take a few more seconds for the connection to obtain the correct IP address but once it does you will see a screen similar to this:



Eduroam is successfully installed and connected, you can now open your browser and enter your login information into the internet accounting window.